

OUTSIDE TROLLEY RELEASE

STEP 1

Position the template on the outside of your garage door, centered below the opener door bracket.

NOTES:

- For a sectional door, position the template 20 to 30 inches below the top of the door.
- For a one-piece door, position template 15 to 25 inches below the top of the door (refer to illustrations).
- If your door construction is metal, the template must be positioned so that all the drilled holes will pass through the inside reinforcement stile of the door.

STEP 2

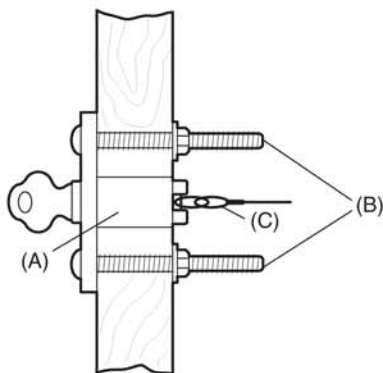
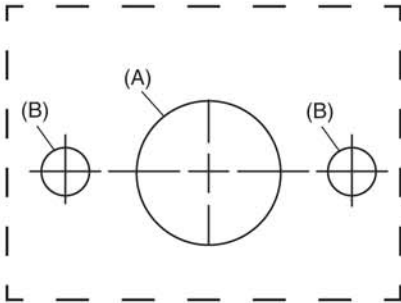
Fasten template at marked location.

STEP 3

Drill a 3/4" diameter hole for the lock (A) and two 1/4" side holes for mounting bolts 1/4"-20x2-1/2" (B). Drill all holes completely through the door.

STEP 4

Uncoil cable (C) attached to end of tumbler. Guide cable (C) through the 3/4" diameter hole from outside the door. Insert the lock assembly and position flush with door.

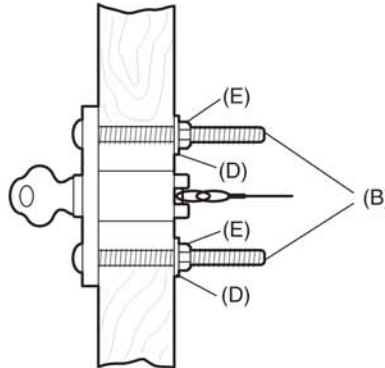


STEP 5

Insert the two mounting bolts (B) into the side holes from outside of door.

STEP 6

Fasten from the inside with 1/4" washers (D) and hex nuts (E).

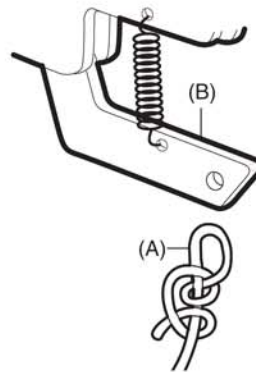


STEP 7

Tighten nuts securely.

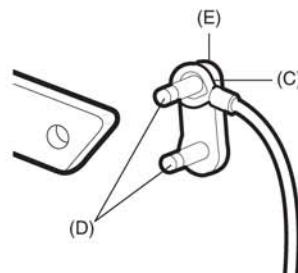
STEP 8

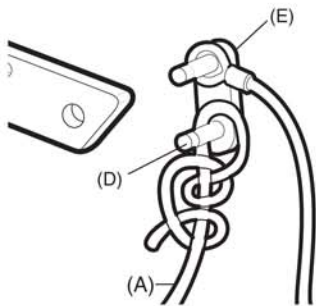
Remove rope (A) from trolley release arm (B).



STEP 9

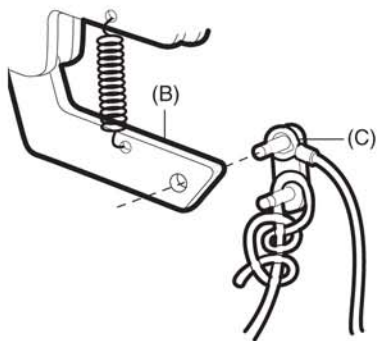
Place free cable loop (C) over one pin (D) of the master link outside bar (E) as shown.





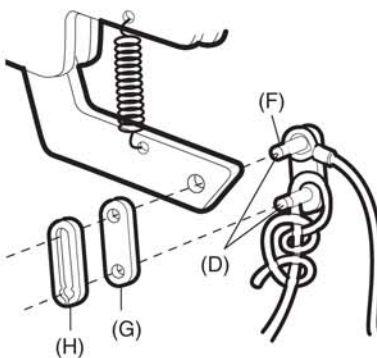
STEP 10

Securely tie a loop at free end of release rope (A) and place over second pin (D) in outside bar.



STEP 11

Push pin holding cable loop (C) through hole in release arm of trolley (B).



STEP 12

Push cap (G) onto the pins (D) and into pin (F) notches.

NOTE: Be sure cable loop and emergency rope are secured to pins.

STEP 13

Slide clip-on (H) spring over cap (G) and lock onto pin notches (F).

STEP 14

Use plastic ties to secure excess cable to door arm.

OPERATION

STEP 1

TO OPERATE EMERGENCY KEY RELEASE

Insert the key into lock and turn clockwise.

STEP 2

Remove the key and tumbler from the lock. Pull firmly on the cable.

DO NOT PULL ON THE KEY OR TUMBLER.

STEP 3

The outer trolley will disconnect from the inner trolley so the door can be opened manually.

STEP 4

Replace tumbler in the lock and remove key. Trolley sections will reconnect automatically when the opener is started.

NOTE: While trolley is disengaged the garage door may be opened manually. For security, be sure you manually lock garage door.

HOW TO ORDER REPAIR PARTS

DEK CANADA INC

1928 ST-REGIS BLVD.

DORVAL, QC

H9P 1H6

TEL: 514-685-5800

TOLL-FREE: 1-800-361-3198

FAX: 514-685-5804

www.dekcanada.com

**WHEN ORDERING REPAIR PARTS
PLEASE SUPPLY THE FOLLOWING INFORMATION:**

PART NUMBER	DESCRIPTION	MODEL NUMBER
--------------------	--------------------	---------------------