

C P C R G

NEW CARRIAGE

W/Release Mechanism

In case of power failure or to release the door, pull the red cord with the red knob down and toward the inside of the garage. This action will activate the "Emergency Door Release" and disengage the carriage from the chain, permitting manual operation of the door. See Fig. 12

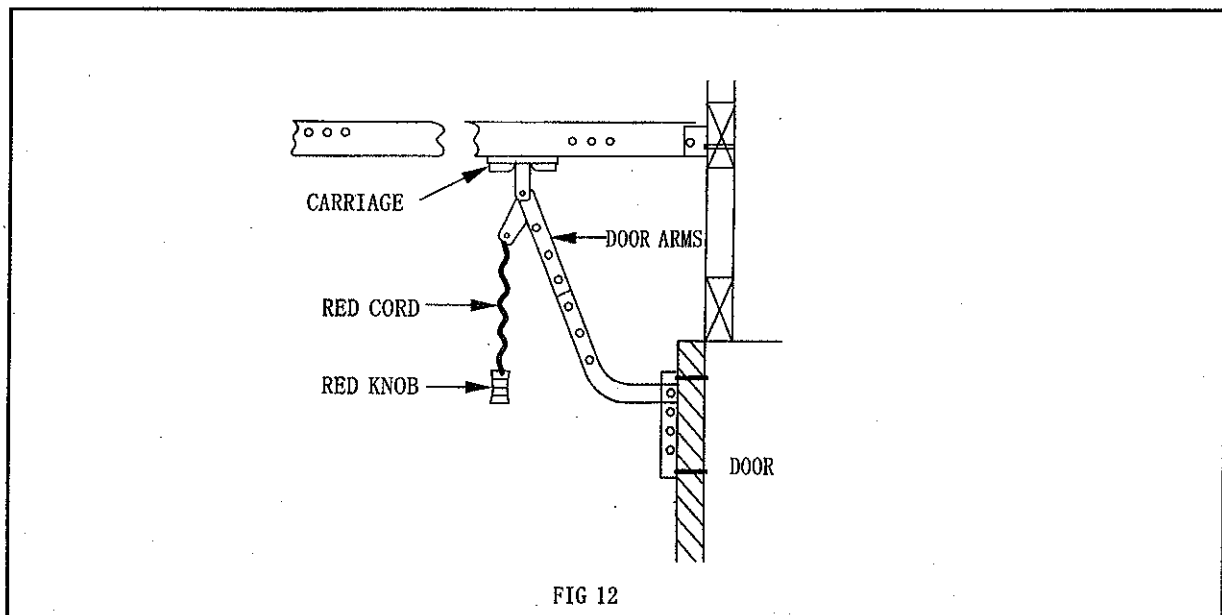


FIG 12

To reengage carriage to drive mechanism, pull the red cord down and toward the door. When power is reactivated, press push button to automatically reconnect the carriage to the drive mechanism. You can also manually raise or lower the door to engage the drive mechanism.