

HEAVY INDUSTRIAL-DUTY GEAR-REDUCED HOIST OPERATOR

Safest Installations. Smartest Innovations

MODEL

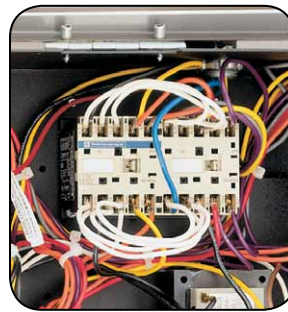
GH 5 HP

COMMERCIAL DOOR OPERATOR



LiftMaster® Commercial Door Operators are engineered, manufactured and tested to provide reliable service to meet the toughest commercial applications.

- Continuous-duty 5 HP brake motor
- Removable hinged electrical box cover
- Specialty designed manual hoist gear system



Reversing Contactor Circuit (M)
(208V/230V, 460V, 575V, 24V NEC Class 2
Circuit with 100VA transformer)

Industrial linear contactor provides significantly longer control runs than conventional contactors. Circuit provides easy selection between C2 and B2 wiring with the movement of a single wire.

LiftMaster®

GH 5 HP

COMMERCIAL DOOR OPERATOR

Standard Features

- **Motor**
AC synchronous continuous-duty brake motor available in 5 HP, 3-phase with 1725 RPM. Voltage available in 208/230 and 460 3-phase or 575 3-phase.
- **Auxiliary Chain Hoist**
Reduced drive chain hoist with electrically interlocked floor level disconnect for manual operation. Hoist wheel is easily moved to right or left hand side of unit, eliminating the need to order left or right hand mounting.
- **Wiring Type**
Reversing Contactor Units (M) have C2 wiring standard and B2 available by simply moving a jumper wire. All operators are pre-wired to accept a sensing edge, photoelectric sensors, radio controls and most types of access control equipment.
- **Drive Reduction**
45:1 using heavy-duty gears running in oil bath. Cast iron housing. Special "All Climate" synthetic gear oil for greater low-temperature performance.
- **Brake**
AC synchronous continuous-duty brake motor.
- **Bearings**
Sealed roller bearings in gear reducer.
- **Push Button Station**
3-button station, for OPEN/CLOSE/STOP functions, is standard for all operators. Controls with 1, 2 and 3 buttons are available.
- **Internal Radio Control Terminal**
Located inside the electrical enclosure. All standard radio control receivers may be used.

Control Accessories and Options

CPS-N4 Commercial Protector System® (recommended)

An inexpensive "non-contact" photo safety sensor designed to sense an obstruction and signal the door operator to reverse to open. Maximum range 45 feet.

Sensing edge (recommended)

Senses an obstruction and signals door operator to stop or reverse upon contact. Either an electric or pneumatic sensing device can be added to bottom edge of door. Requires D2, C2, or B2 wiring.

Rolling Door Interlock Switch

Disables the operator control circuit when a manual door lock is engaged, preventing damage to the door and operator.

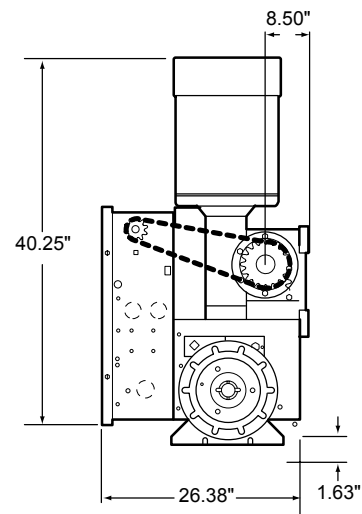
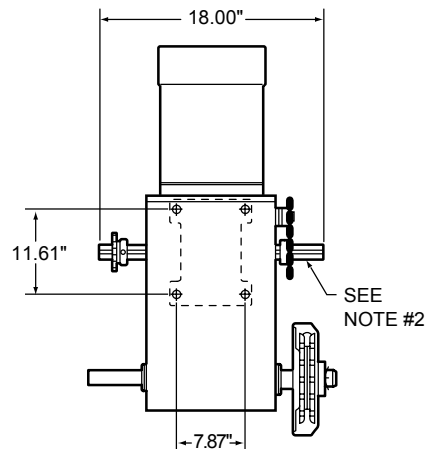
Friction Clutch

Adjustable in-line friction clutch helps protect against damage to the door and operator should the door meet an obstruction.

Radio Control

Universal transmitters and receivers are available to signal the operator to open and/or close door.

Clearance and Mounting Details



NOTES:

1) Dimensions vary with horsepower of operator, max. dimension shown.

2) Output shaft with 1" x 1/4" Key for 1/2 thru 1 HP operators
1-3/16" x 1/4" Key for 1-1/2 thru 2 HP operators,
1-1/4" x 1/4" Key used for 3 HP operators,

LiftMaster®

Commercial Door Operators

THE CHAMBERLAIN GROUP, INC.

845 Larch Avenue • Elmhurst, IL 60126

www.DEKCanada.com

CHAMBERLAIN IS AN ISO9001:2008 REGISTERED COMPANY



I.C./ F.C.C.
Certified

**TWO-YEAR
WARRANTY**

Chamberlain reserves the right to make design or specification changes without notice.
©2010 The Chamberlain Group, Inc. Printed in U.S.A. 08/10 LMCDGH5 rev 8/10