



**HIGH-PERFORMANCE DC-POWERED
BARRIER GATE OPERATOR WITH
BUILT-IN BATTERY BACKUP**

The Mega Arm and Mega Arm Tower are DC-powered, high-performance additions to the LiftMaster® family of gate operators.

The heavy-duty motor supports 6,000 cycles per day with an open or close speed of 2.5 seconds making this barrier gate ideal for high cycle commercial applications. Choose from several different arm types or lengths to meet you application. Operator is constructed of T-6 Aircraft Quality Aluminum which provides superior strength and corrosion resistance.

Built-in battery backup provides seamless operation of the gate operator and all DC control and sensing devices in the event of a power loss (900 full cycles on battery backup with a 12 ft. Barrier arm).

Built in Receiver



Exclusive from LiftMaster®, a single remote control solution for gate access and additional access points. Ability to add up to 50 remote controls.

MA/MAT

STANDARD FEATURES

Highest grade "Aircraft Quality" Aluminum Chassis

High strength rust proof T-6 aluminum alloy chassis for superior strength corrosion resistance. Light enough for a one man installation.

Magnetic Limit Sensors

Designed for high cycle applications, contain no moving parts to wear out, provide reliable operation.

Break Away Arm

Available with 12 or 15 ft. break away arm. Arm is held in place with break away retaining nuts. If arm is hit, it will break away and can be re-installed. Universal arm can be set up for right or left hand mount.

New & Improved Built-in Surge Protection

Added protection at point of incoming line voltage from power line spikes and surges.

1/2 HPS DC Motor with Soft Start Stop

Heavy duty motor provides strong reliable operation.

Auxiliary Outlet

Simplifies adding / powering up accessories devices. Save the expense of having to add an extra outlet.



Selectable Auto Open

15 seconds after power failure of upon battery depletion barrier arm can be set to automatically open.

15 second delay helps reduce nuisance call backs due to short power interruptions or brown outs. Meets fire code for many local Municipalities.

Battery Backup

Provides operation during power outages to maintain traffic flow. Automatically resets to normal operation when power is restored. (see specific cycle info per model see below).

The built in battery back-up provides up to 900 full cycles (12 ft. arm).

Heavy Duty Drive System

Extra Large commercial grade #80 gearbox provides strong reliable operation.



Arm One



Arm Two



Arm Three



Arm Four

OPTIONAL EQUIPMENT

Articulating Arm

For operation in low headroom environments.

Clutch option

Allows arm to be manually pushed open. Arm automatically resets to normal closed position upon receiving activation. Ideal for areas that are concerned with vandals damaging arm.

ADDITIONAL FEATURES

Universal Controller With 8 Inputs

Right- Or Left-Handed Operation

Safety-stop Tailgate Feature

Anti-Tailgate Quick-Close Feature

SPECIFICATIONS

Operator Speed

2.5 seconds to open or close

Power

120V / 220V applications

Accessory Power

24VDC 500 MA
Battery Backup for
Accessory Power

Operator Weight (without arm)

MA - 89 lbs.
MAT - 113 lbs.

UL Listed

UL325 & UL991 - Class I, II, III, IV

Construction

Gear Reduction:
60:1 Reducer in synthetic oil bath
Motor:
1/2 HP Equivalent
Continuous-Duty 24VDC/
800 RPM

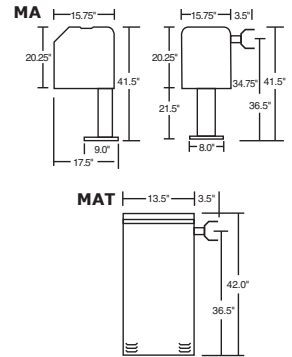
Chassis:

Powdercoated 1/4" Aluminum
Alloy

Cover:

MA - Plastic
MAT - Aluminum

Dimensions



RECOMMENDED CAPACITIES

HP*	MAX. GATE LENGTH (ft.)	CYCLES /DAY
1/2	12' & 15' aluminum arm 14' soft-padded arm	6,000

*equivalent 24VDC

2-YEAR WARRANTY

10-YEAR WARRANTY

Operator Frame